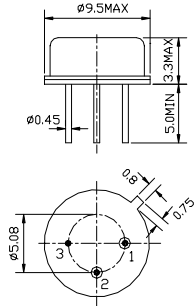


1.Package Dimension Unit: mm

Pin No.	Function
1.	Input
2.	Output
3.	Ground

2.Electronic Characteristics

Electrostatic Sensitive Device (ESD)

Item		Units	Minimum	Typical	Maximum
Center Frequency (fo)		MHz	435.645	435.72	435.795
Insertion Loss		dB	—	1.2	2.0
Quality Factor	Unloaded Q	—	—	13,000	—
	50Ω Loaded Q	—	—	1,900	—
Temperature Stability	Turnover Temperature		—	25	—
	Turnover Frequency	KHz	—	fo+2.7	—
	Freq. Temp. Coefficient	ppm/	—	0.032	—
Frequency Aging		ppm/yr	—	<±10	—
DC Insulation Resistance		MΩ	1.0	—	—
RF Equivalent RLC Model	Motional Resistance R ₁	Ω	—	18	25
	Motional Inductance L ₁	μH	—	85.38	—
	Motional Capacitance C ₁	fF	—	1.56	—
	Shunt Static Capacitance C ₀	pF	1.4	1.7	2.0